



# How Lesson Reports Drive Progress and Confidence

---

## The Role of Lesson Reports in Continuous Improvement

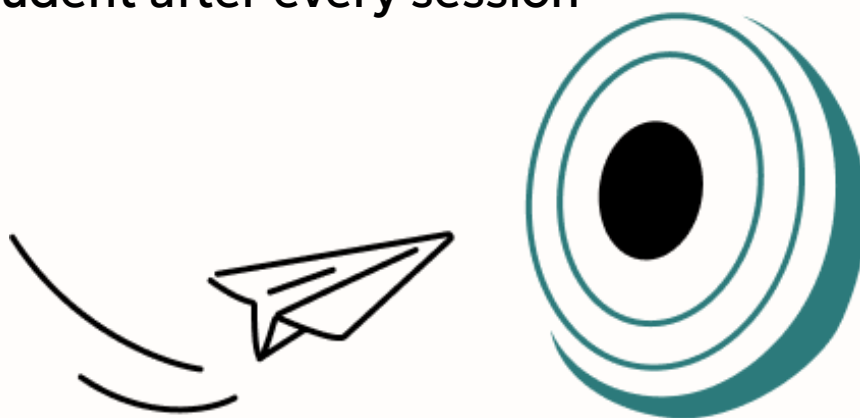




At **Loopedin**, learning is a partnership. We bring together professional teachers, families, and wellbeing-focused practices to make every session purposeful and positive.

Each report includes:

- **Lesson Summary** – key topics covered and objectives achieved
- **Strengths** – where the student excelled
- **Challenges** – areas for focus and reinforcement
- **Student Comment** – the learner's own reflection and ownership of progress
- **Tutor Comment** – encouragement, insight, and personalised feedback
- **Tailored Next Steps** – clear actions for continued improvement
- **Wellbeing Check-in** – completed by the student after every session





# Why Lesson Reports Matter

## 1. Measurable Impact on Progress

Consistent, high-quality feedback is one of the strongest predictors of student success.

Research from **Visible Learning** (Professor John Hattie, 2023) found that effective feedback can accelerate learning by the equivalent of **8 months of additional progress per school year** — one of the highest recorded educational influences (effect size = 0.70).

The Education Endowment Foundation also reports that targeted feedback interventions lead to an average **+0.7 standard deviation in attainment**, equivalent to **30% faster progress** compared to students who don't receive regular feedback.

At Loopedin, our lesson reports ensure that every session ends with direction, clarity, and momentum, turning each lesson into a stepping stone for measurable growth.





## 2. Builds Reflection and Independence

When students read their strengths, reflect on their challenges, and identify how they felt during learning, they develop **metacognitive awareness** — the ability to think about how they learn. This process builds self-regulation, motivation, and resilience.

Students who regularly self-assess make up to **20–25% more progress** than peers who receive feedback passively (Education Endowment Foundation, 2022).

## 3. Strengthens Parent–Tutor Partnership

Each report is shared directly with parents, ensuring everyone stays informed and aligned. This creates a genuine “feedback loop” — tutors adapt their approach, parents provide timely support, and students feel understood.

When parents and tutors see the report at the end of each session, they can **adapt immediately** for the next lesson.





For example, if a student's wellbeing check-in shows that they've been feeling **overwhelmed** for a few weeks, the tutor can adjust the session pace or focus, **Loopedin can step in to offer wellbeing coaching**, and the parent can provide support at home before the issue escalates.

Early intervention like this prevents small struggles from becoming major setbacks — protecting the student's mental health while maintaining steady academic progress. Research shows that students with strong emotional wellbeing are **twice as likely** to achieve above-average grades (OECD, 2021), and that wellbeing and progress are **mutually reinforcing**: students who feel better, learn better — and those who make progress, feel better.

## 4. Progress and Wellbeing Go Hand in Hand

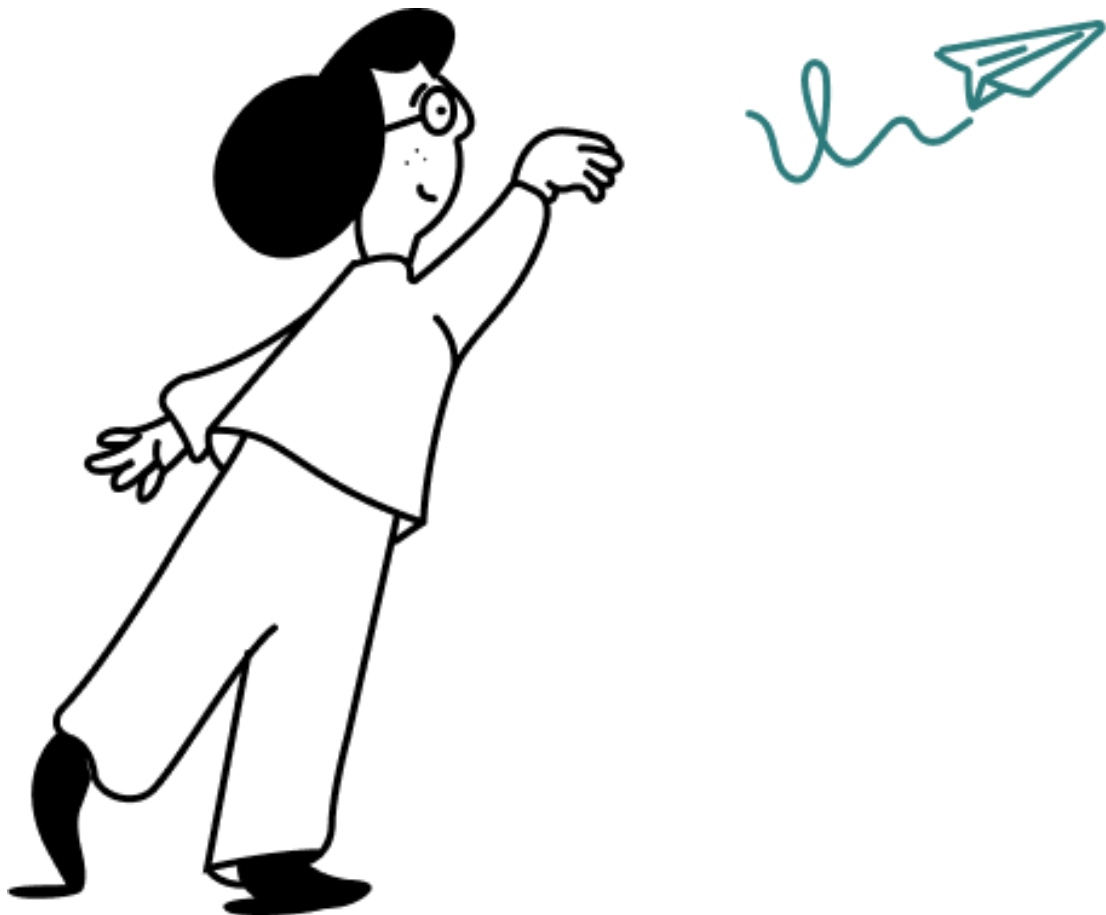
By combining structured feedback with emotional reflection, the Loopedin Lesson Report connects the two most important pillars of education: **achievement** and **wellbeing**.





A 2023 study by the University of Cambridge found that students who regularly reflect on both academic progress and emotional wellbeing show **higher levels of engagement and long-term retention** than those who focus solely on academic outcomes.

The wellbeing check-in ensures every student's voice is heard, allowing Loopedin tutors to tailor support to each learner's needs, ensuring growth that is both measurable **and sustainable**.





# In Summary



The **Loopedin Lesson Report** transforms every session into a complete learning cycle:

- **Drives faster academic progress** through targeted, actionable feedback
- **Encourages reflection** and student ownership of learning
- **Keeps parents and tutors aligned** through clear, ongoing communication
- **Safeguards emotional wellbeing** through regular check-ins and early intervention

**At Loopedin, we know progress and wellbeing are inseparable, when a student feels supported, they learn faster, achieve more, and thrive longer.**